

# **AQS**

**AQUASPIRIT**



UKRAINIAN SHIPBUILDING COMPANY



# CONTENT

---

ABOUT THE COMPANY	4
SPIRIT 700 HD	6
SPIRIT 585 HD	8
SPIRIT 530 HD	10
SPIRIT 450 HD	12
SPIRIT 470 HD	14
A 600 HD	16

## ABOUT THE COMPANY

---

The company "AQUASPIRIT" is a leading Ukrainian manufacturer of military-grade and special-purpose aluminum boats. The company specializes in designing and manufacturing aluminum-hull boats tailored to perform the most demanding missions for naval, search-and-rescue, law enforcement, and other government organizations. We offer comprehensive solutions, including engines, electronics, and specialized options adapted to military needs.

With over six years of experience, "AQUASPIRIT" successfully executes even the most complex projects. Our boats are actively used by the National Police of Ukraine, Special Units of the Armed Forces of Ukraine, as well as rescue and law enforcement services in other European countries.

All "AQUASPIRIT" boats undergo extreme testing to meet the highest reliability standards. The product range is certified in compliance with the requirements of Lloyd's Register's Rules and Regulations for the Classification of Special Service Craft.

Our vessels are crafted by professionals using state-of-the-art equipment and are assembled by hand from high-quality certified materials, ensuring exceptional strength, reliability, and durability.

# AQUASPIRIT



# S700HD

---

The S700HD is a special-purpose RIB-type boat with an aluminum hull designed for naval, search-and-rescue, and patrol operations. This model is equipped with a D-shaped tube, ensuring the boat remains buoyant even if the tube is damaged (the boat can operate even without the tube). The S700HD delivers top-tier handling at high speeds, capable of reaching 90 km/h, allowing it to maneuver between obstacles, make sharp turns, and maintain speed reserves.





**S700 HD TECHNICAL SPECIFICATIONS**

Maximum length	6,99 m
Maximum width	2,85 m
Draft	0,495 m
Passenger capacity	11 ppl
Maximum engine power	300 hp
Speed with 300 hp engine	90 km/h
Engine leg length	25"/635 (XL) mm
Fuel tank capacity	300 liters
Maximum payload	1050 kg
Weight of empty boat	1160 kg
Weight of fully equipped boat	1602 kg
Weight at maximum load	2890 kg
Hull material	EN AW 5083 H111
Boat category	C

# S585HD

---

The SPIRIT S585HD is a versatile boat that can serve as an assault landing craft, auxiliary, raid, rescue, patrol, or transport vessel. With a draft of just 0.42 meters, it can approach the shore closely for landing operations, accommodating up to 8 people. This boat is ideal for Navy, Intelligence, Airborne, Special Operations, Support, and Logistics units of the Armed Forces. Like the SPIRIT 700, the SPIRIT S585HD is built with a full-height hull and equipped with a D-shaped tube. This design significantly increases the usable internal space compared to traditional RIB boats. The full board aluminum hull ensures the boat can continue its mission even with severe damage to the tube. Additionally, the technology of removable tube allows for quick replacement without specialized skills in field conditions.





#### **S585 HD TECHNICAL SPECIFICATIONS**

Maximum length	5,88 m
Maximum width	2,57 m
Draft	0,425 m
Passenger capacity	8 ppl
Maximum engine power	150 hp
Speed with 150 hp engine	90 km/h
Engine leg length	25"/635 (XL) mm
Fuel tank capacity	132 liters
Maximum payload	1050 kg
Weight of empty boat	744 kg
Weight of fully equipped boat	1095 kg
Weight at maximum load	1854 kg
Hull material	EN AW 5083 H111
Boat category	C

# S530HD

---

The SPIRIT 530, measuring 5.3 meters in length, combines a spacious cockpit with a seaworthy hull, excellent speed, and performance characteristics powered by engines ranging from 70 to 100 hp. This model is used for rescue and law enforcement operations. The SPIRIT 530 offers optimal maneuverability and unparalleled stability both on calm water and in waves.





### S530 HD TECHNICAL SPECIFICATIONS

Maximum length	5,35 m
Maximum width	2,31 m
Draft	0,35 m
Passenger capacity	7 ppl
Maximum engine power	100 hp
Speed with 100 hp engine	78 km/h
Engine leg length	20"/508 (L) mm
Fuel tank capacity	62 liters
Maximum payload	1000 kg
Weight of empty boat	285 kg
Weight of fully equipped boat	527 kg
Weight at maximum load	1425,5 kg
Hull material	EN AW 5083 H111
Boat category	C

# S450HD

---

The SPIRIT S450HD is a versatile and lightweight RIB (Rigid Inflatable Boat) designed for professional use by military personnel in challenging conditions. The boat weighs 175.5 kg, with a payload capacity of up to 850 kg. Key features of this model include the ability to launch and recover from shorelines in any terrain, with a draft of just 0.3 meters. The boat has excellent speed performance, unparalleled maneuverability, and can easily plane even when fully loaded (with 9 people), allowing for quick navigation through dangerous areas during missions. The S450 can be carried by hand over land, thanks to its perimeter handle system.





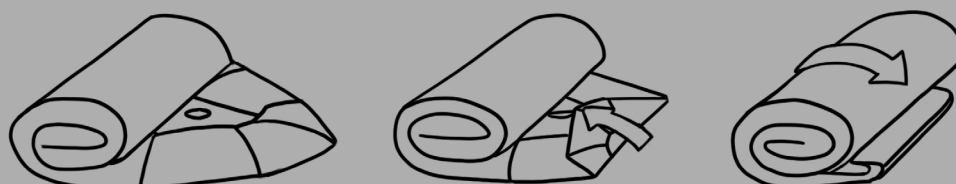
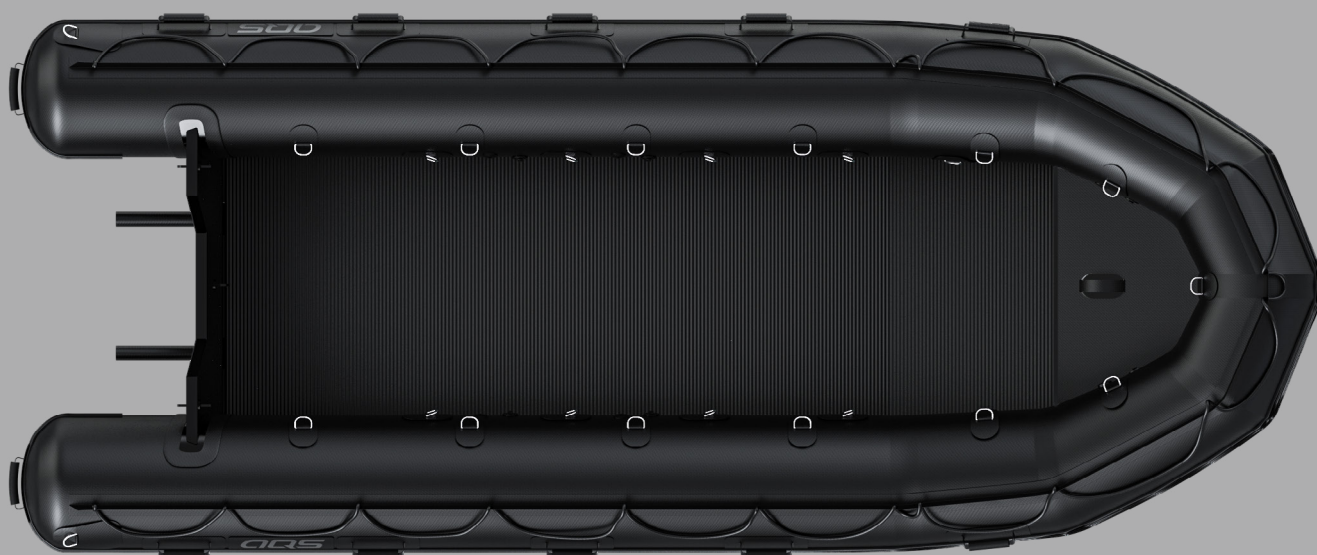
#### S450 HD TECHNICAL SPECIFICATIONS

Maximum length	4,24 m
Maximum width	2,14 m
Draft	0,3 m
Passenger capacity	6-8 ppl
Maximum engine power	75 hp
Speed with 75 HP engine	70 km/h
Engine leg length (inches)	20/508 (L) mm
Fuel tank capacity (optional)	22,3-42 liters
Maximum payload	750-850 kg
Weight of empty boat	175 kg
Weight of fully equipped boat	228 kg
Weight at maximum load	1050 kg
Hull material	EN AW 5083 H111
Boat category	C

# F470HD

---

The inflatable boat is specifically designed to meet the needs of the military. Thanks to its removable floorboards, which add rigidity to the boat on the water, the soft material of the hull and keel, the boat can quickly deploy into operational position and just as easily pack into a transport bag. No trailer is required for its transport, and it can be easily hidden during military operations along the coastline (the boat weighs only 114 kg). The transom and floorboards are made of aluminum. This boat is ideal for naval units, military intelligence, airborne troops, and special operations forces.





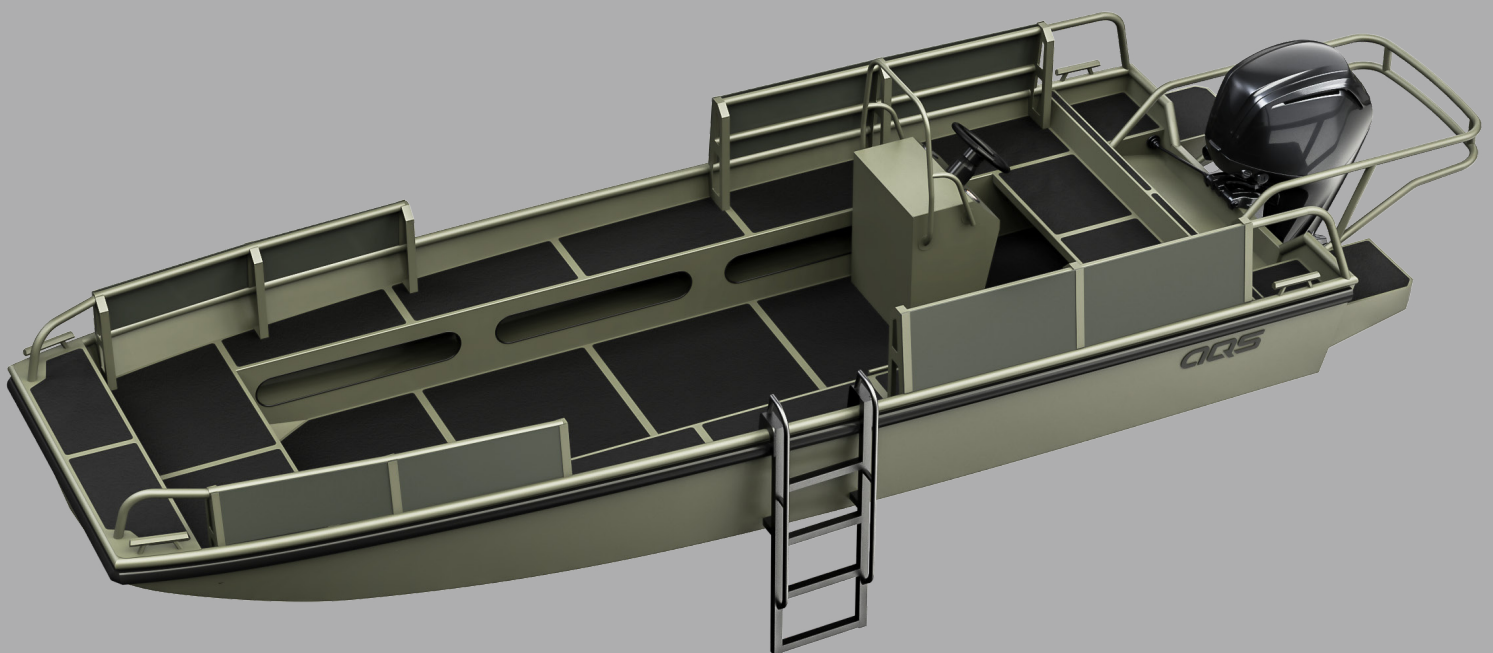
#### F470 HD TECHNICAL SPECIFICATIONS

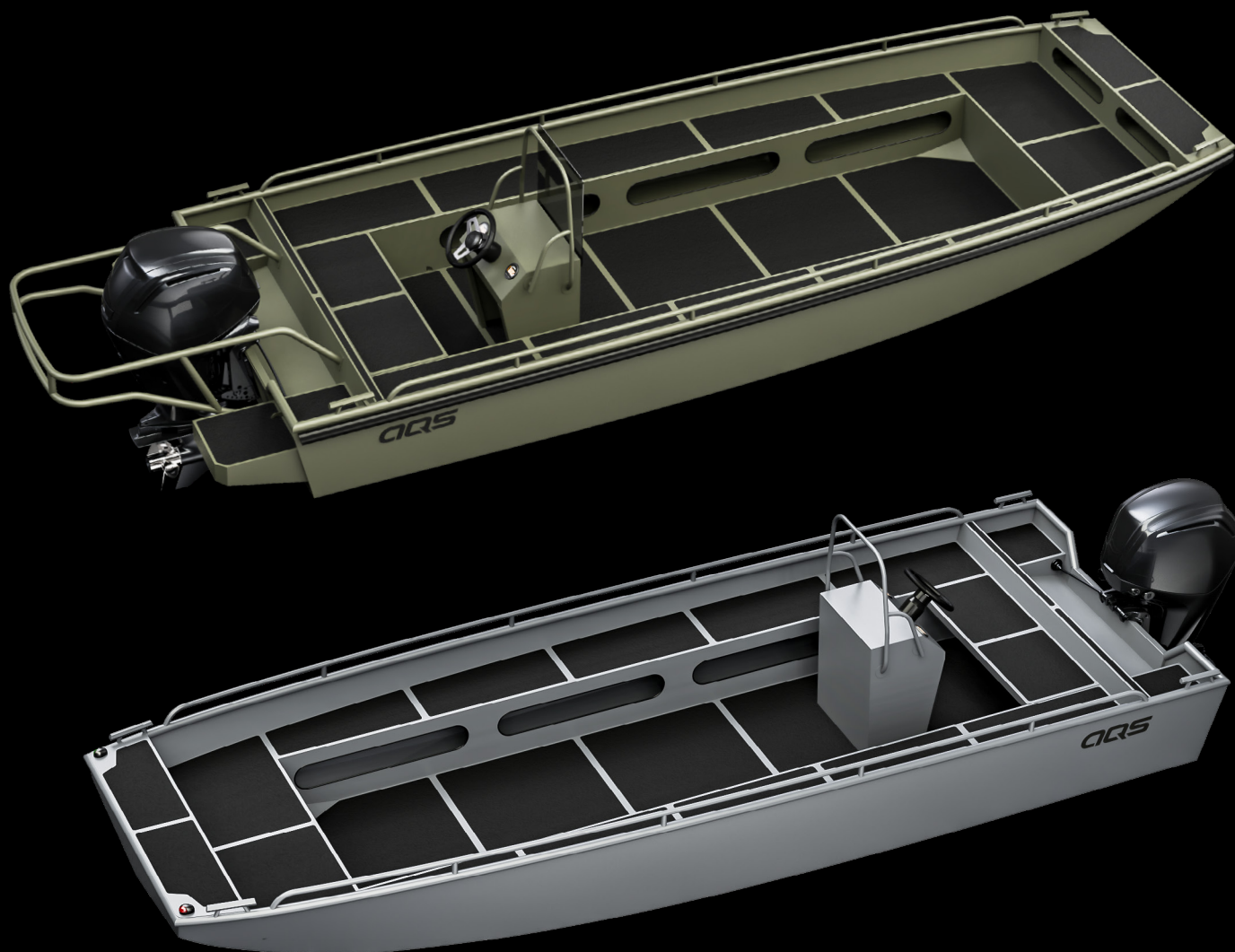
Maximum length	4,70 m
Maximum width	1,95 m
Draft	0,331 m
Number of hull compartments	5+1
Passenger capacity	10 ppl
Maximum engine power	60 hp
Speed with 50 HP engine	51 km/h
Engine leg length (inches)	20"/508 (L) mm
Maximum payload	1120 kg
Weight of empty boat	127 kg
Weight at maximum load	1450 kg
Transom material	EN AW 5083 H111
Deck floorboard material	EN AW 5083 H111
Boat category	C

# A600

---

The A600 is a multipurpose workboat that serves as an excellent platform for rescue and transport operations. With a draft of only 0.2 meters, its full-metal aluminum hull allows it to navigate in hard-to-reach areas such as marshes, branches, rocky bottoms, and even beach itself, allowing it to approach evacuation or ammunition unloading points closely. The boat's advantages include the capacity to carry 12 fully equipped people. Its high payload capacity (1700 kg) and spacious cockpit make it suitable for transporting bulky cargo. The low freeboard and expanded bow platform enable rapid disembarkation and embarkation (loading and unloading), even in extreme conditions.





### A600 TECHNICAL SPECIFICATIONS

Overall length	5,86 m
Maximum width	2,13 m
Draft	0,2 m
Passenger capacity	12 ppl
Maximum engine power	115 hp
Speed with 115 hp engine (2 people)	69 km/h
Speed with 115 hp engine (12 people)	60,2 km/h
Speed with 115 hp engine(max load)	20,7 km/h
Engine leg length	20"/508 (L) mm
Fuel tank capacity (optional)	42-150 liters
Maximum payload	1700 kg
Weight of empty boat	450 kg
Weight of fully equipped boat	738,5 kg
Weight at maximum load	2438,5 kg
Hull material	EN AW 5083 H111
Buoyancy block fill	Polyurethane Foam
Boat category	D



CLUBSOCIETY



**LLC "AQUASPIRIT"**

Ukraine, Kyiv, 03083  
Pirohivskyi Shliakh, 34

+38 095 235 12 28

+38 044 351 75 89

[info@aquaspirit.com.ua](mailto:info@aquaspirit.com.ua)

[www.aquaspirit.boats](http://www.aquaspirit.boats)

[www.aquaspirit.com.ua](http://www.aquaspirit.com.ua)